

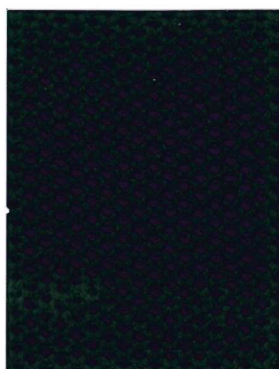
Technische Daten / Technical data

Material
Stoffgewicht/ m²
Scheuertouren
Lichtechtheit
Pilling (Knötchenbildung)
Reibechtheit nass/trocken

90% Polyester, 10% Elasthan
550 g
50.000 (DIN EN ISO 12947-2:2017-03, Martindale)
min. 5 BM (DIN EN ISO 105-B2)
piltt nicht
4/4 GM (DIN EN ISO 105-X12)

Material
Fabric weight/m²
Abrasion resistance
Light fastness
Pilling
Colour fastness to rubbing wet/dry

90% polyester, 10% elasthan
550 g
50.000 (DIN EN ISO 12947-2:2017-03, Martindale)
min. 5 BM (DIN EN ISO 105-B2)
no pilling
4/4 GM (DIN EN ISO 105-X12)



CH01 schwarz



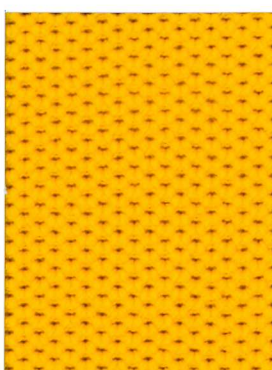
CH02 grau-braun



CH03 sand



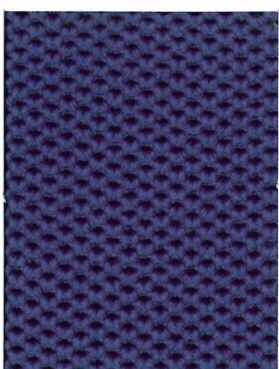
CH04 amarena-rot



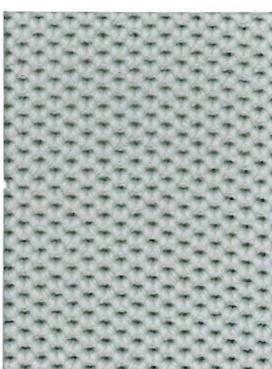
CH05 senf-gelb



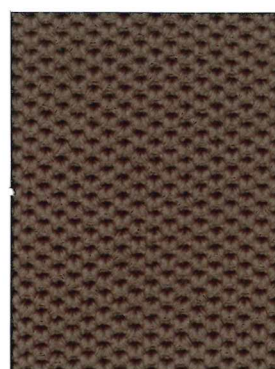
CH06 olive



CH07 blau-grau



CH08 weiß-grau



CH09 anthrazit

CHANGEABLES

Technische specificaties / Caractéristique techniques

Materiaal
Stofgewicht/m²
Aantal toeren
Lichtechtheid
Pluizen
Wrijvingechtheid nat/droog

90% polyester, 10% elastaan
550 g
50.000 (DIN EN ISO 12947-2:2017-03, Martindale)
min. 5 BM (DIN EN ISO 105-B2)
pluist niet
4/4 GM (DIN EN ISO 105-X12)

Composition
Poids du tissu/m²
Nombre de tours d'abrasion
Tenue à la lumière
Boulochage
Résistance au frottement à humide/sec

90% polyester, 10% élasthanne
550 g
50.000 (DIN EN ISO 12947-2:2017-03, Martindale)
min. 5 BM (DIN EN ISO 105-B2)
ne bouloche pas
4/4 GM (DIN EN ISO 105-X12)



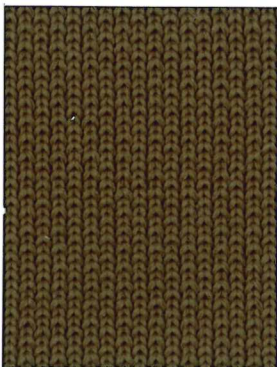
CH03 sand



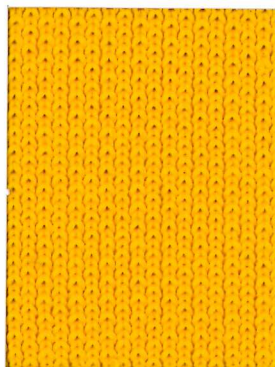
CH02 grey-brown



CH01 black



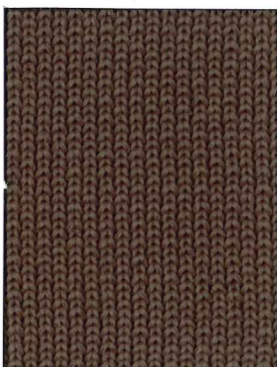
CH06 olive



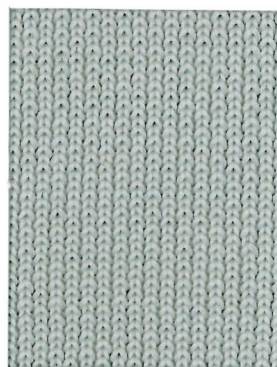
CH05 mustard yellow



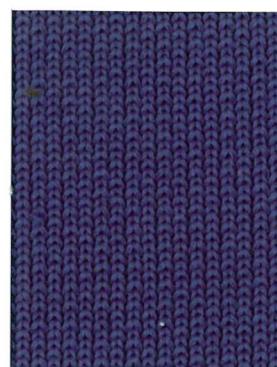
CH04 amarena red



CH09 anthracite



CH08 white-grey



CH07 blue-grey